



Kultura očuvanja biljnog zdravlja - znanstvena istraživanja patogenih gljiva šumskog drveća

Sanja Novak Agbaba
Nevenka Čelepirović

Hrvatski šumarski institut

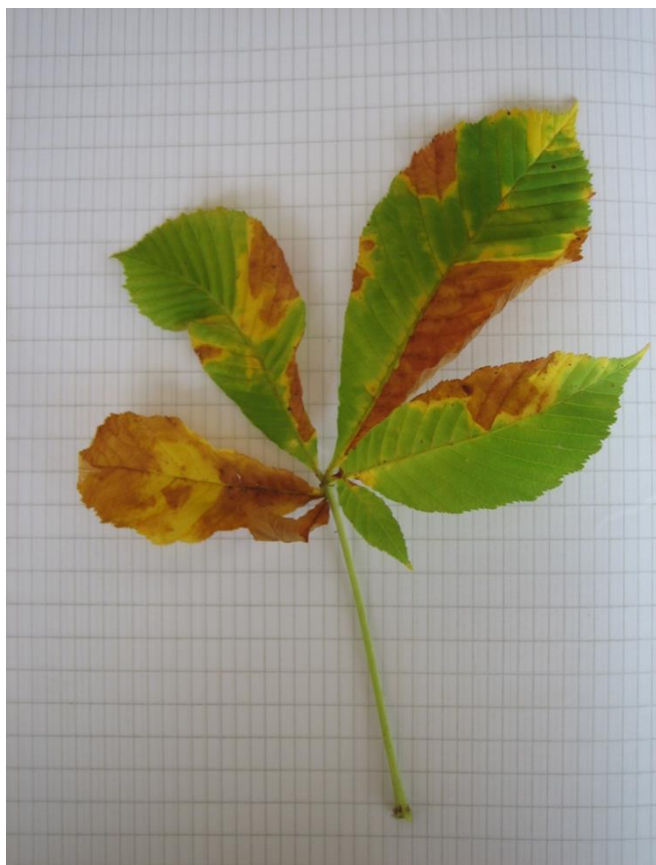
Zagreb, 10.05.2021.



Laboratorij za fitopatološko istraživanje



Simptomi bolesti nekroza lista
divljeg kestena,
uzročnik gljiva
Guignardia aesculi



Simptomi bolesti pepelnica na
listu hrasta lužnjaka
uzročnik gljiva
Erysiphe alphitoides



Simptomi bolesti nekroza lista
obične bukve,
uzročnik gljiva
Apiognomonina errabunda



Simptomi bolesti pjegavost lista pitomog
kestena,
uzročnik gljiva
Mycosphaerella maculiformis



Gljive truležnice na deblu

Trametes sp.



Phellinus pini



Simptomi bolesti na deblu - aktivni rak kore pitomog kestena
uzročnik gljiva
Cryphonectria parasitica



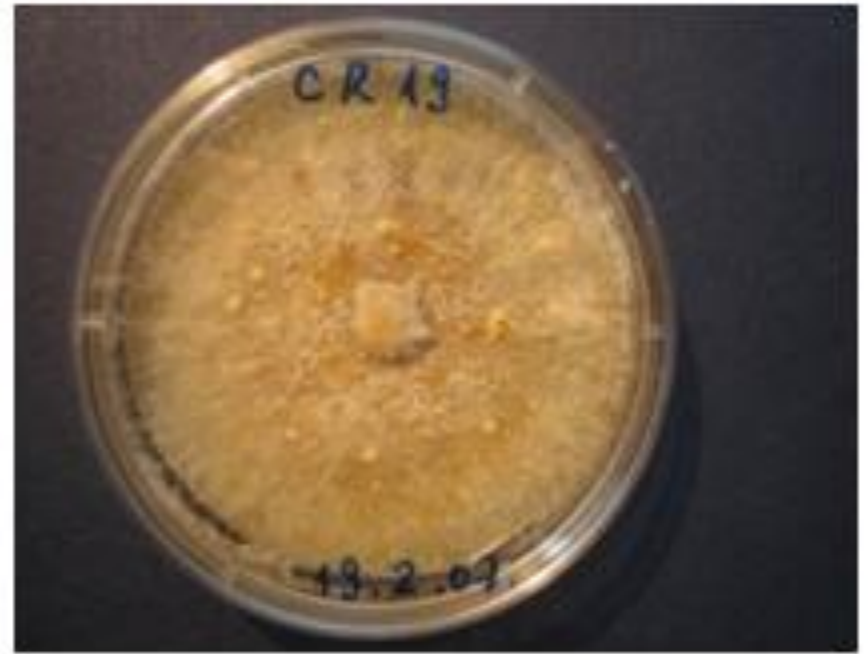
Postupak izolacije gljive iz biljnog tkiva nacjepljivanjem na hranjivu podlogu



Cryphonectria parasitica



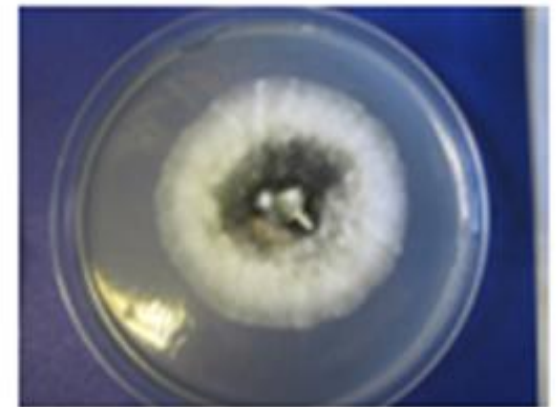
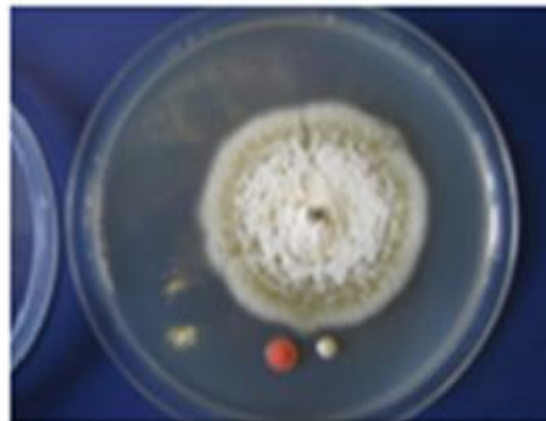
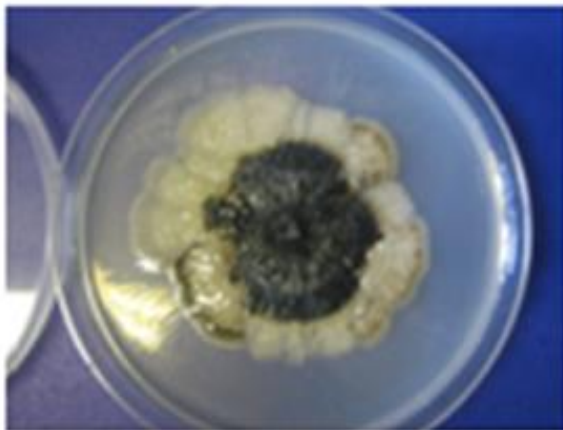
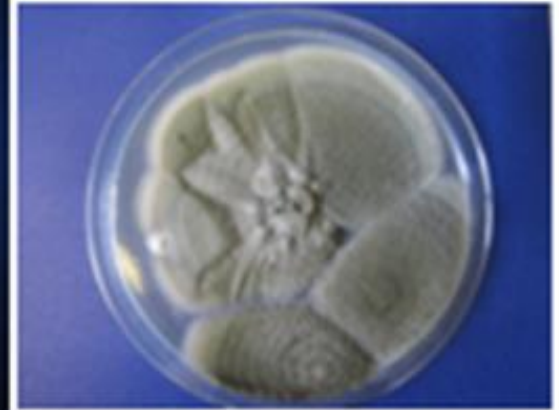
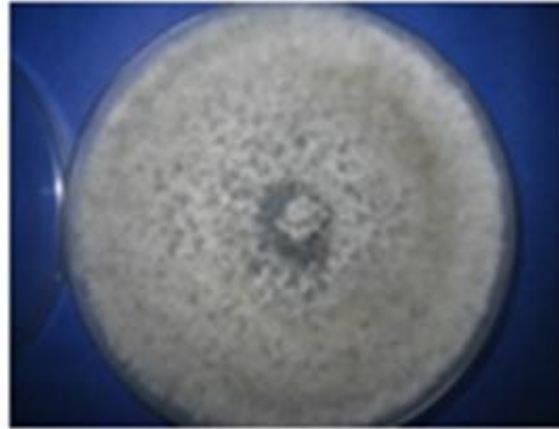
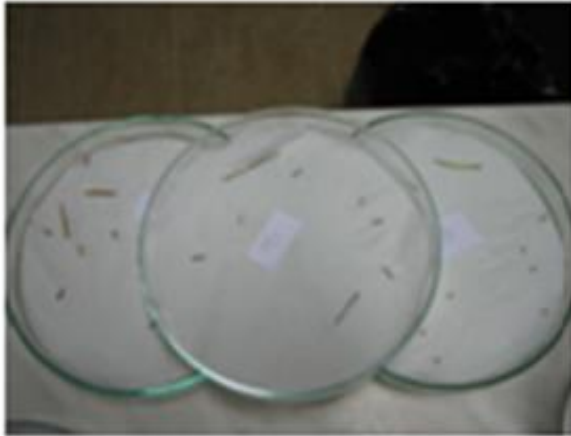
Aktivni rak – narančasti micelij



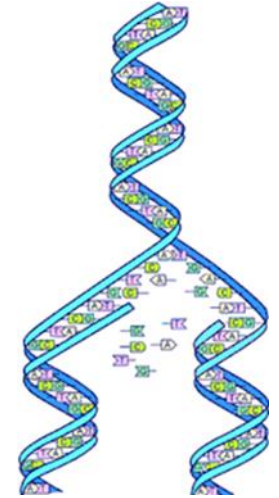
Površinski rak – bijeli micelij



Kulture raznih patogenih gljiva izoliranih iz bolesnih iglica običnog bora



LABORATORIJ ZA MOLEKULARNO-GENETIČKA ISPITIVANJA



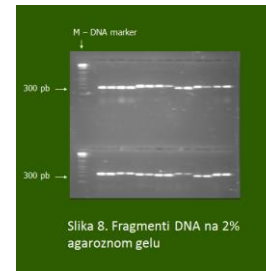
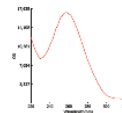
No. : 11
 Serijski Broj : 9111
 Model : 2000
 Opis : UVITEC 2000
 Datum : 11.11.2011

Nucleic Acid Conc : 788,20 ng/µL

OD260/280 : 2,17

OD260/280 : 2,12

Wavelength	Absorbance
260nm	0,150
280nm	0,070
300nm	0,030
320nm	0,015
340nm	0,008
360nm	0,004
400nm	0,002

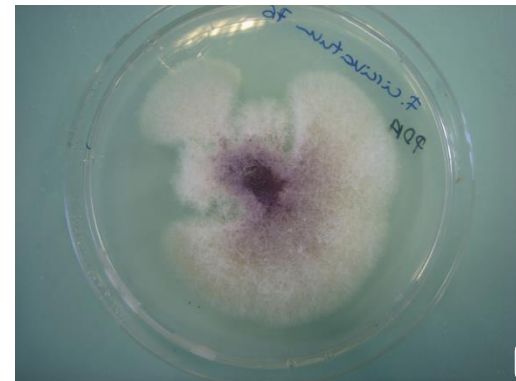
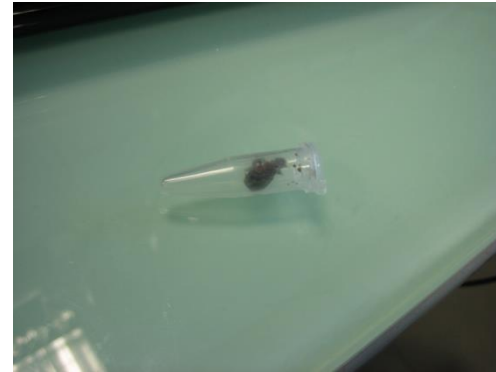


Metode analize DNA

- Izolacija DNA
- Umnožavanje fragmenata – lančana reakcija polimeraze (PCR)
- Sekvenciranje DNA– određivanje primarnog redoslijeda parova baza
- Uspoređivanje sekvenci DNA sa sekvencama DNA pohranjenim u genetičkoj bazi podataka (GenBank, NCBI)



Izolacija sveukupne DNA



Lančana reakcija polimeraze

PCR - Polymerase Chain Reaction

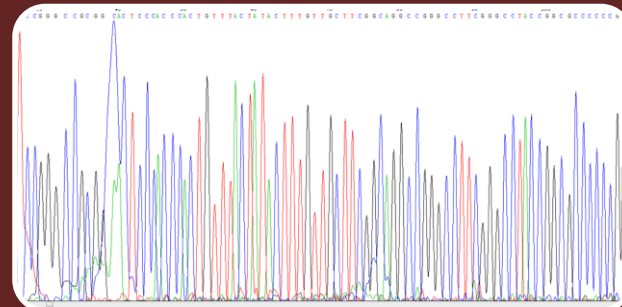
Populacijska struktura

Mikrosateliti

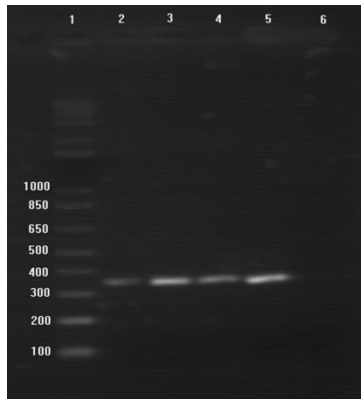


Brza identifikacija

**RNA geni
ribosoma**



DNA sekvenca *Eutypella parasitica* (ITS regija)



1 tgcatcgatg aagaacgcag cgaaatgcga taagtaatgt gaattgcaga attcagtga
61 tcatcgaatc ttgaaacgca cattgcgccc attagtattc tagtgggcat gcctgttcga
121 gcgtcatttc aacccttaag ccctagttgc ttagtgttgg gaacctacc tgtaggtagt
181 tccttaaata tatcggcgga gtcgtgatga ccctaagcgt agtaattctt tctcgcttca
241 gtgggtgcag cgctgacgtt tagccgtaa accccctatt ttctagtggg tgacctcgga
301 tcaggtagga ataccgcta act



Banka gena (NCBI)

NCBI Resources How To Sign in to NCBI

PopSet PopSet Search Limits Advanced Help

GenBank Send to:

Eutypella parasitica 5.8S ribosomal RNA gene, partial sequence; internal transcribed spacer 2, complete sequence; and 28S ribosomal RNA gene, partial sequence.

PopSet: 917548175
[PopSet](#) [FASTA](#)

Sequences

Study Details

Eutypella parasitic davidson & lorenz seven years after the first tests in Croatia
Novak Agbaba,S.

[Go to:](#)

LOCUS KP868619 323 bp DNA linear PLN 22-AUG-2015
DEFINITION Eutypella parasitica 5.8S ribosomal RNA gene, partial sequence;
internal transcribed spacer 2, complete sequence; and 28S ribosomal
RNA gene, partial sequence.
ACCESSION KP868619
VERSION KP868619.1
KEYWORDS .
SOURCE Eutypella parasitica
ORGANISM [Eutypella parasitica](#)
Eukaryota; Fungi; Dikarya; Ascomycota; Pezizomycotina;
Sordariomycetes; Xylariomycetidae; Xylariales; Diatrypaceae;

Analyze this data set
Run BLAST alignment

Related information
Taxonomy
Nucleotide

Recent activity
[Turn Off](#) [Clear](#)

- Eutypella parasitica 5.8S ribosomal RNA gene, partial sequence; internal tran: PopSet
- PopSet Links for Nucleotide (Select 917548175) (1) PopSet
- Eutypella parasitica 5.8S ribosomal RNA gene, partial sequence; internal tr: Nucleotide
- Eutypella AND parasitica (36) Nucleotide
- Molecular genetic tools to infer the origin of forest plants and wood See more...

